

Certificate Issued To:
Lost Empire Herbs
2825 S. Rodeo Gulch Rd #12
Soquel, CA 95073



Work performed at:
Alkemist Labs
1260 Logan Ave B2
Costa Mesa, CA 92626
714-754-HERB (4372)
714-668-9972 (FAX)
sales@alkemist.com
www.alkemist.com

Certificate of Analysis: Raw Crude Pearl Powder (CPP2016B)
Macroscopy & Microscopy with Digital Photo-Documentation

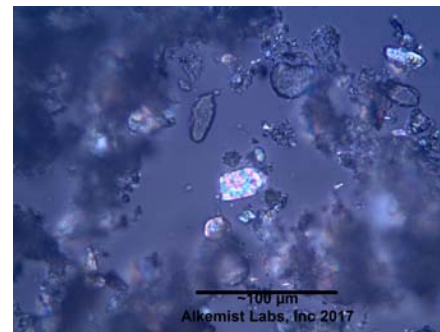
1



2



3



Company Name: Lost Empire Herbs
Title: Raw Crude Pearl Powder
Plant Part: na
Sample Received: 1/11/2017
Sample Description: Foil Pouch
Form of Botanical: powder
Appearance: (1) Foil Pouch
Lot : CPP2016B
Sample : CAX01117SUP1_1
Latin Name: Raw mineral powder
Analyst: E. Sudberg & N. Popejoy
Magnification: (2) 400X
Chemical Reagents: (2) acidified chloral hydrate glycerol solution
Sample Findings: (2) surface granular, piled up by several to ten thin layers, laminae densely arranged
Magnification: (3) 400X
Chemical Reagents: (3) acidified chloral hydrate glycerol solution
Sample Findings: (3) irregular polychromatic pieces under polarized light
Reference Source: An Illustrated Handbook on Microscopic Identification of Chinese Crude Drugs for Chinese Pharmacopoeia, Zhou, F., 2008; Pharmacopoeia of The Peoples Republic of China, Volume 1, 2010
MIC-SOP-54-04, MIC-SOP-54-05, MIC-SOP-54-06, MIC-SOP-510-07

Comments & Conclusions: This sample has characteristics of pearl based on the consistent characteristic cellular structure of pearl powder as well as the reference cited above. The characteristic cellular structures identified in this sample are the surface granular, piled up by several to ten thin layers, laminae densely arranged seen in micrograph (2) above. In micrograph (3) we see the irregular polychromatic pieces under polarized light. **This test sample, Raw Crude Pearl Powder (CPP2016B), has characteristics of pearl powder.**

NOTE: The presence of soluble excipients and other plant species material was not detected in this test sample.

Analyzed by: Nicholas Popejoy

Examined, Reviewed & Authorized by: Élan M Sudberg, CEO & Microscopist, Alkemist Labs

Report Date: 1/18/2017

ISO/IEC 17025



This report applies to the sample investigated and is not necessarily indicative of the quality or condition of apparently identical or similar products. This report is for the exclusive use of the party who requested the report and not for public dissemination or use by third parties, including for promotional purposes, without the prior written permission of Alkemist Labs, Inc. This report provides technical results for a specific sample and the report shall not be altered, modified, supplemented or abstracted in any manner. Any violation of these conditions renders the report and its results void. © 2017 Alkemist Labs, Inc. All Rights Reserved