

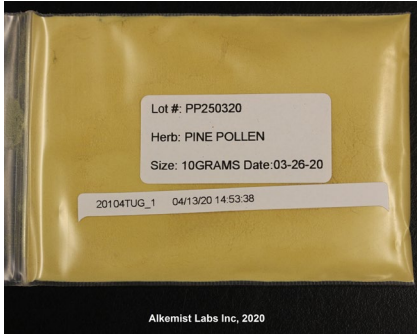
Certificate Issued To:  
**Lost Empire Herbs**  
195 Aviation Way Suite 102  
Watsonville, LA 95076  
USA



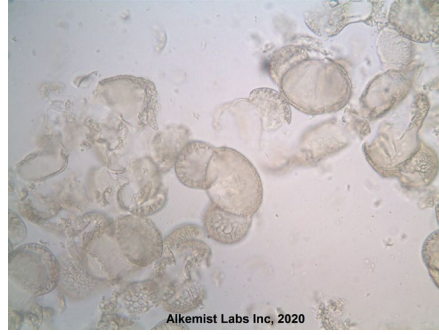
Work performed at:  
**Alkemist Labs**  
12661 Hoover Street  
Garden Grove, CA 92841  
714-754-HERB (4372)  
sales@alkemist.com

**Certificate of Analysis: Pine Pollen (PP250320)**  
Microscopy with Digital Photo-Documentation

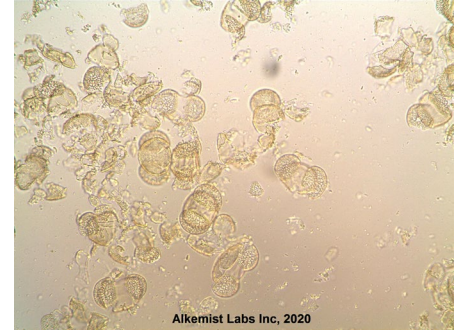
1



2



3



Company Name:	Lost Empire Herbs
Title:	Pine Pollen
Plant Part:	Pollen
Sample Received:	4/13/2020
Sample Description:	Clear Reclosable Plastic Bag
Form of Botanical:	powdered extract
Appearance:	(1) Fine Yellow Powder
Lot :	PP250320
Sample :	20104TUG_1
Latin Name:	Pinus sp.
Analyst:	E. Sudberg, I. Solorzano & P. Fast
Magnification:	(2) 400X
Chemical Reagents:	(2) acidified chloral hydrate glycerol solution
Sample Findings:	(2) bisaccate pollen grain
Magnification:	(3) 200X
Chemical Reagents:	(3) acidified chloral hydrate glycerol solution
Sample Findings:	(3) bisaccate pollen grains
Reference Source:	Textbook of Pollen Analysis, Knut, F., 1989; Method Developed by Alkemist Labs MIC-SOP-54-04, MIC-SOP-54-05, MIC-SOP-54-06, MIC-SOP-510-07

**Comments & Conclusions:** This sample has characteristics of *Pinus* sp. pollen based on the characteristics described in the reference cited above. The characteristic cellular structures identified in this sample are the bisaccate pollen grain seen in micrograph (2) above. In micrograph (3) we see the bisaccate pollen grains. **This test sample, Pine Pollen (PP250320), has characteristics of *Pinus* sp. pollen.**

**NOTE:** Bisaccate pollen is a characteristic shared by other species within the families Pinaceae and Podocarpaceae, and may not be specific to *Pinus* sp. The presence of soluble excipients and other plant species material was not detected in this test sample.

Analyzed by: Patrick Fast

Examined, Reviewed & Authorized by: Élan M Sudberg, CEO

Report Date: 4/14/2020



This report applies to the sample investigated and is not necessarily indicative of the quality or condition of apparently identical or similar products. This report is for the exclusive use of the party who requested the report and not for public dissemination or use by third parties, including for promotional purposes, without the prior written permission of Alkemist Labs, Inc. This report provides technical results for a specific sample and the report shall not be altered, modified, supplemented or abstracted in any manner. Any violation of these conditions renders the report and its results void. © 2020 Alkemist Labs, Inc. All Rights Reserved